



**VALVE**

Part No.	Detail	THB
LVCA4030	Thermo Valve INT	1,825
LGKA30	SMT Valve	1,785
LVCA4035N	Thermo Pro Valve	1,947
LVH200L-N	Thermo Pro H Adapter Left	3,351
LVH200R-N	Thermo Pro H Adapter Right	3,351
L5440-23	DIN / K Insert w. Viton O-rings, EAN ready	591



LGKA30



LVCA4030



LVCA4035N



DIN/INT  
AIR/EAN  
Nitrox Ready



LVH200L-N



LVH200R-N



L5440-23

**THERMO TWIN ISOLATION**

Part No.	Detail	THB
LVCA5420	Thermo Twin Isolation	9,928



**TANKS**



Cylinder	Service Pressure	Capacity Air	Outside Diameter	Overall Length	Empty Weight	Min. Internal Volume	Price in THB
Part no.	psi / bar	cu.ft. / liters	In. / mm	In. / mm	lbs. / kg.	cu.in/ ltrs	THB
LL06	3,000 207	6.1 172.8	3.21 81.41	11.1 282.6	2.5 1.2	54 0.9	3,246
LL13	3,000 207	13.2 373.8	4.38 111.13	13.1 333.4	6.0 2.7	116 1.9	4,068
LL19	3,000 207	19.9 563.6	4.38 111.132	18.6 471.4	8.2 3.7	175 2.9	4,964
LL30	3,000 207	30.0 849.6	4.88 123.83	21.9 555.0	11.6 5.3	263 4.3	5,546
LL40	3,000 207	40.0 1,132.8	5.3 133.4	24.6 628.7	15.3 6.9	350 5.7	6,623
LL50	3,000 207	48.4 1,370.7	6.89 175.01	19.0 482.6	21.2 9.6	424 6.9	7,123
LL63	3,000 207	63.0 1,784.2	7.25 184.15	21.9 555.0	26.7 12.1	552 9.0	7,294
LL80	3,000 207	77.4 2,192.0	7.25 184.15	26.1 661.9	31.4 14.2	678 11.1	7,315
LL100	3,300 207	98.8 2,798.0	8.00 203.20	26.2 665.7	41.0 18.6	804 13.2	11,171



Cylinder prices do not include valves



# THERMO

## THERMO VALVE PARTS

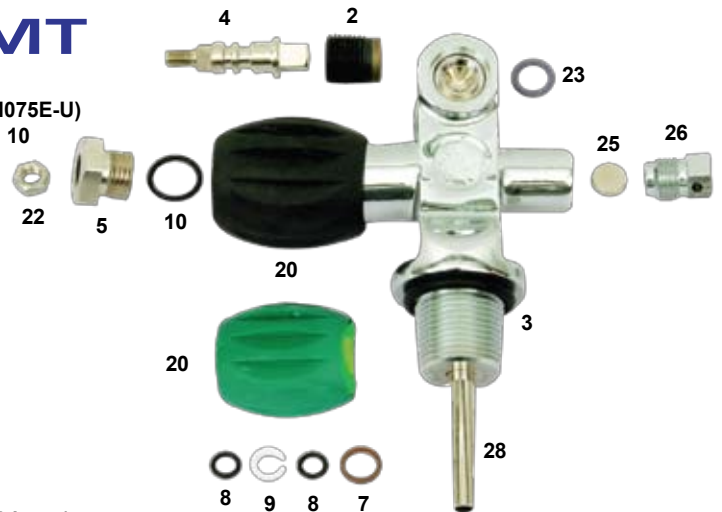
- LVK01-AIR Overhaul Kit Thermo K-Valves (Air)  
(MA015-U, L35069, L5270-16N, L3100-9-U, L5270-5N)
- LVK01-EAN Overhaul Kit Thermo INT/DIN Valves (Nitrox)  
(MA015V-U, L35069-K, L5270-16N, L3100-9E-U, L5270-5N)
- L3990-5000N 1. Safety Assembly (3,000 psi), EAN ready
- TR014-U 2. O-Ring Valve Outlet
- TR014S-U 2. O-Ring Valve Outlet Polyurethane
- LGR014P9-U 2. O-Ring Valve Outlet Viton
- MA015-U 3. O-Ring Tank Neck
- MA015V-U 3. Viton O-Ring Tank Neck
- L5270-15N 4. Dip Tube plated (VP04 Pre 10/09), EAN ready
- L5270-16N 4. Dip Tube plated (VX04 Post 10/09), EAN ready
- L35069 5. Plug Assembly HP-Seat (same as Sherwood)
- L35069-K 5. Plug & Seat Assembly HP-seat, (as Sherwood) O2 ready
- L5270-16N 6. Bonnet Gasket, EAN ready
- L5270-8PN 7. Stem EAN ready
- L3100-9-U 8. O-Ring for Stem, Thermo Valve, AIR
- L3100-9E-U 8. Viton O-Ring Stem Thermo
- L5270-5N 9. Stem Packing, Ean ready
- L5270-4PN 10. Bonnet Nut, (same as Sherwood) EAN ready
- L5240-10 11. Handwheel Washer, EAN ready
- L5240-6A 12. Handwheel - Black
- L5270-6N 12. Handwheel - Green
- L5240-9 13. Spring EAN ready
- L5203-7P 14. Handwheel Nut, EAN ready
- LVP15V 15. Viton O-Ring (Thick) Outlet DIN/INT -Thermo Pro Valve
- MP31B-U 15. O-Ring (Thick) Outlet DIN/INT - Thermo Pro Valve
- L5440-23 16. DIN / K Insert w. Viton O-rings, EAN ready



## SMT VALVE PARTS



- LGVP00-AIR Service Kit SMT Valve  
(LGVP07/09/45, MA015-U, 2 x LGR010E-U, LGRM075E-U)
- LCV04-A 1. Complete Stem Assembly Incl. 4, 5, 7, 2x8, 9, 10
- LGVP45 2. HP-Seat SMT Valve, Oxygen ready
- LGVP04 4. Stem
- LGVP05 5. Gland Nut
- LGVP07 7. Gasket
- LGR010E-U 8. O-Ring Stem
- LGVP09 9. Backup Ring
- LGRM075E-U 10. O-Ring Bonnet
- LGVP20 20. Handwheel elastomer
- LGVP99 20. Handwheel green (Nitrox)
- LGVP22 22. Handwheel Nut
- TR014-U 23. O-Ring Valve Outlet
- LGR014P9-U 23. Viton O-Ring Outlet
- LGVP25-33 25. Burst Disk 3,300 psi (5,000 burst)
- LGVP26-33 26. Safety Plug only
- LCV26-30 25.&26. Safety Plug & Burst Disk 3,000 psi (5,000 burst)
- LGVP28 28. Dip Tube



## SHERWOOD VALVE PARTS



- L350620-AIR Overhaul Kit Sherwood Valve **Sherwood Valve**  
(MA015-U, L350067, L350069, L350610, L350618)
- L5203-7P 1. Handwheel Nut (same as Thermo), EAN ready
- L350611A 2. Spring - Sherwood valve
- L60002 3. Handwheel Sherwood - Black
- L1413 4. Handwheel Washer, Sherwood valve
- L5270-4PN 5. Bonnet Nut (same as Thermo), EAN ready
- L350610 6. Copper Gasket
- L35067 7. Thick Teflon ring (new style seal)
- L350618 8. Thin Teflon ring (new style seal)
- L9350612 9. Stem/Spindle
- L35069 10. Plug Assembly HP-Seat (same as Thermo)
- L35069-K 10. Plug Assembly HP-Seat (same as Thermo) O2 ready
- L400012048 12. Safety Plug Assembly 3,000 psi

